



# What do you think?





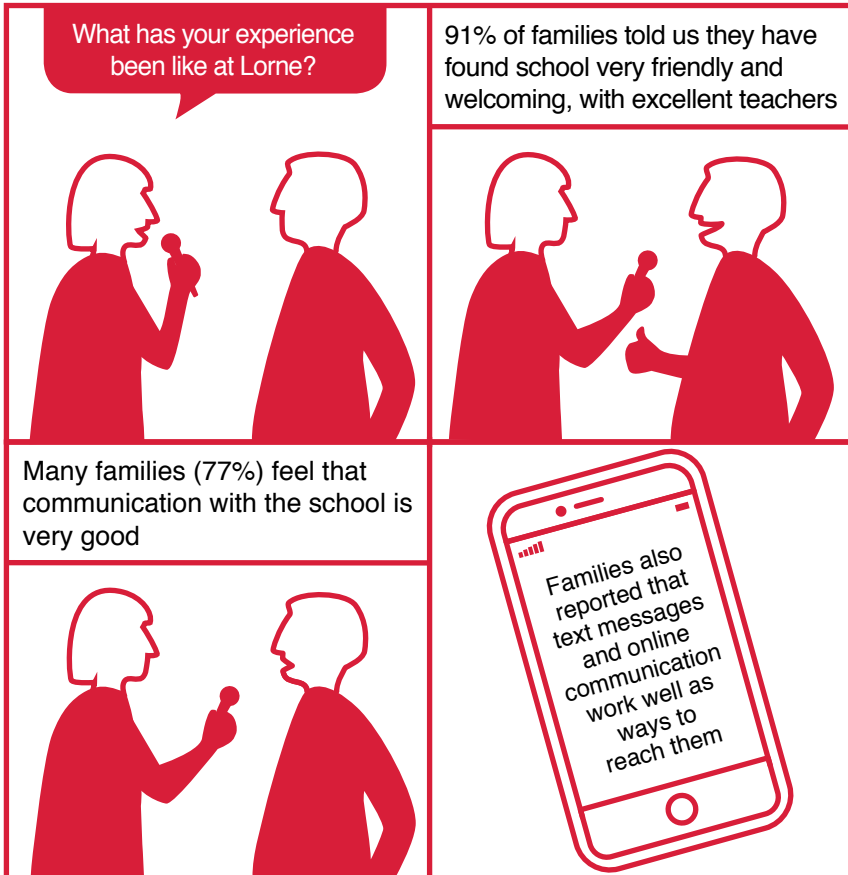
# What is this all about?

Throughout the year we have been consulting parents, carers and families, the most important influences in a child's life. This booklet shows what we have learnt so far.

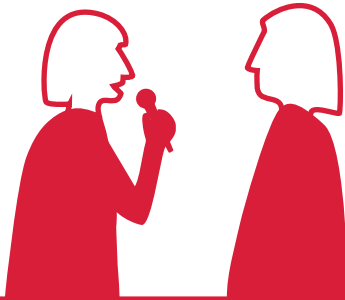


This project is about finding out what parents, carers and families have to say about Lorne Primary School, and looking for ways to make it better.

# What have you told us?



Do you, as families, feel well supported by the school?

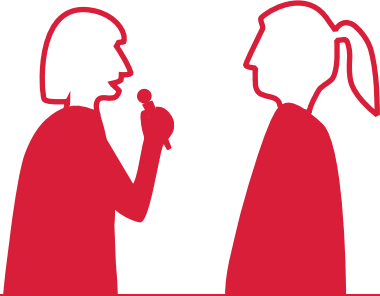

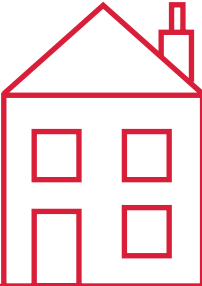



60% told us that the school supports parents and carers, and that there are useful courses that they can take part in

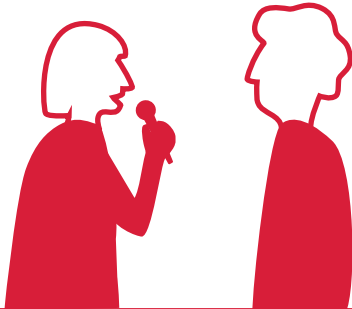


However, 30% of families feel they are unaware of extra support that Lorne provides, and would like more promotion of the support available

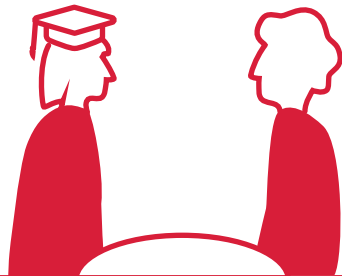


<p>How do you feel about home learning?</p> 	<p>66% of families think home learning and homework are connected, as home-learning complements what the school does</p>
<p>60% of families showed an interest in events focused on homework and home learning</p>	 <p>27% of families think that home-learning and homework are completely different things</p>
	

Do families feel they can be involved in the school?



66% of families feel there are opportunities to get involved with



Families are involved in the classroom, on trips, and even organise events and bake sales



However, 20% of families said they want to be more involved with the school, but do not have time



When do you have time to get involved with the school?

You told us that Mondays and Fridays are your preferred days and mid-mornings and evenings are the best times

You were most interested in workshops on...

7% Getting back into employment



10% English learning support



11% Establishing routines at home



12% Digital skills support



18% Coffee mornings



20% Healthy cooking



23% Supporting read and writing



24% Supporting numeracy learning



145 families took part in the consultation, 70% of the school community!



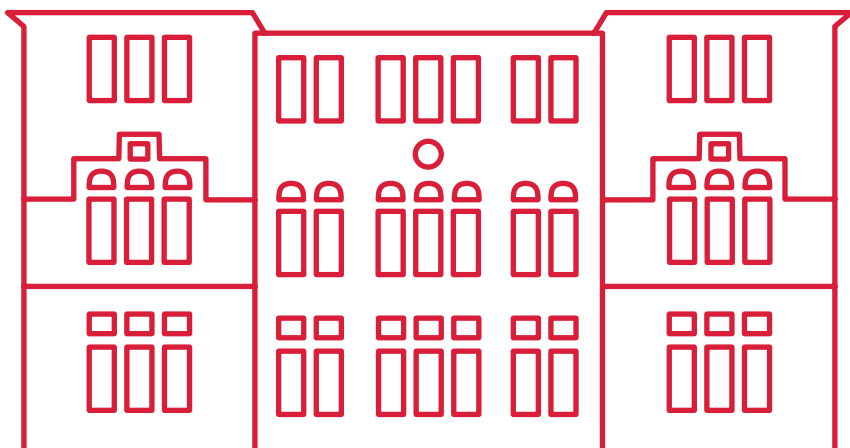
# How can we make this better?

What Lorne Primary School can do:

Provide Numeracy and Mathematics learning opportunities through YouTube clips, workshops, etc.

Build communication for all families including texts, website, monthly newsletters, YouTube, Twitter and ParentPay, ensuring as much notice as possible.

Share information/guidance around support available for learners at Lorne.



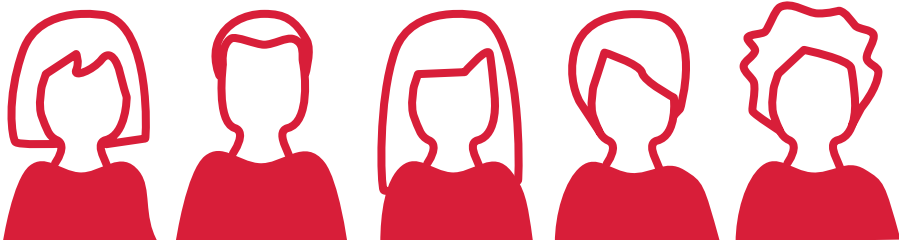
# Who are we?

This project was designed and delivered by People Know How, in partnership with Lorne Primary School.

We are People Know How, an Edinburgh charity that works with people and communities to provide innovative solutions to address social issues.

Our work is founded on consulting and listening to the people we aim to support.

We work alongside them to unlock their ideas, delivering projects that directly provide the tools, support and services that they have identified a need for.



# What next?



Do you have ideas you'd like to share?

Contact the school at:  
[www.lorneprimary.co.uk/contact](http://www.lorneprimary.co.uk/contact)

Or email People Know How at:  
[miren.ochoa@peopleknowhow.org](mailto:miren.ochoa@peopleknowhow.org)

# Contact

Miren Ochoa  
Operations Manager

0131 569 0525

[miren.ochoa@peopleknowhow.org](mailto:miren.ochoa@peopleknowhow.org)  
[www.peopleknowhow.org](http://www.peopleknowhow.org)

People Know How  
525 Ferry Road  
Edinburgh EH5 2FF

Registered charity in Scotland  
No. SC043871



/peopleknowhow



@PKHinnovation



@peopleknowhow



/PeopleKnowHow1

