



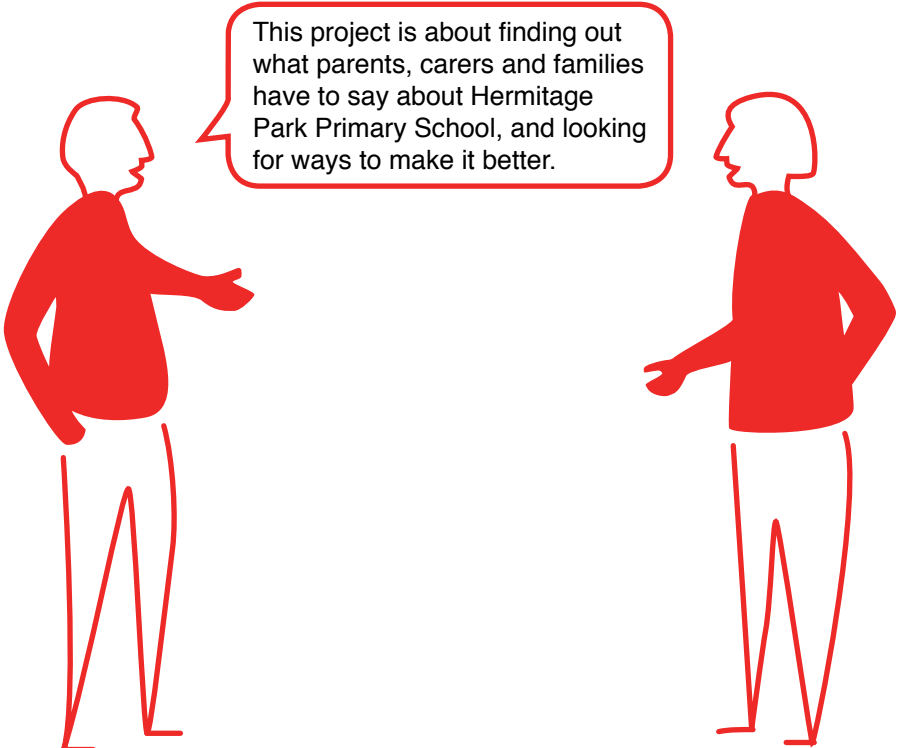
# What do you think?





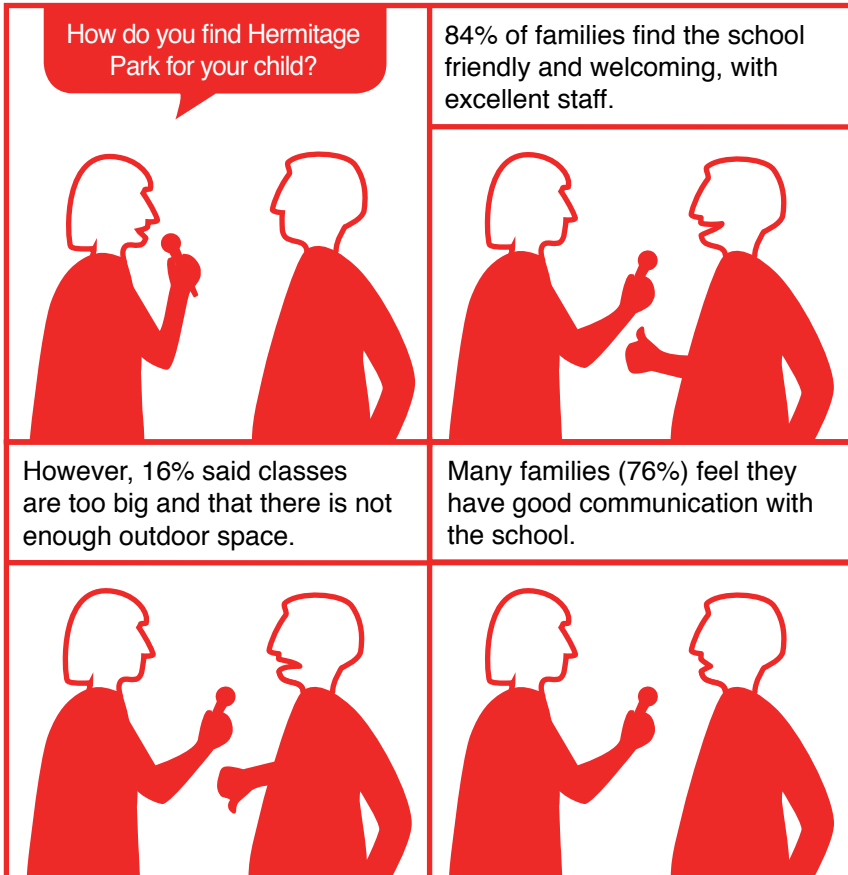
# What is this all about?

Throughout the year we have been consulting parents, carers and families, the most important influences in a child's life. This booklet shows what we have learnt so far.

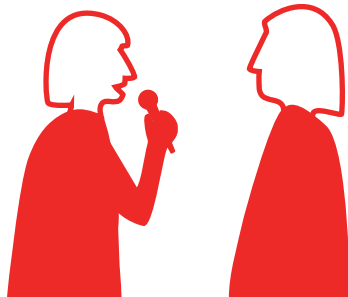
An illustration of two stylized human figures in profile, facing each other as if in conversation. They are drawn with simple red outlines. A speech bubble originates from the figure on the left and contains text. The figures are wearing long-sleeved shirts and trousers.

This project is about finding out what parents, carers and families have to say about Hermitage Park Primary School, and looking for ways to make it better.

# What have you told us?



Do you feel involved and supported by the school?



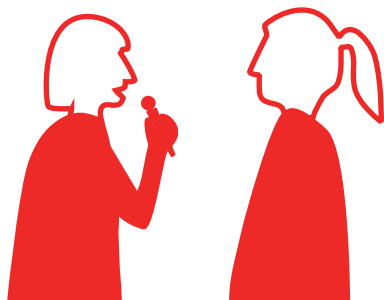
80% of families feel they receive a good amount of information at the start of the school year.



For pupils transitioning from P7 to High School, families told us they found high school visits and enhance transition meetings with parents most useful.



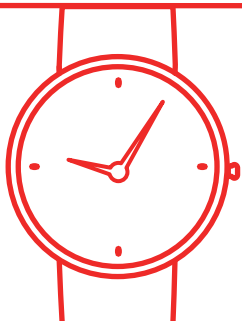
How do you feel about home learning?



Almost half of families see home learning as positively reinforcing what is taught at school.

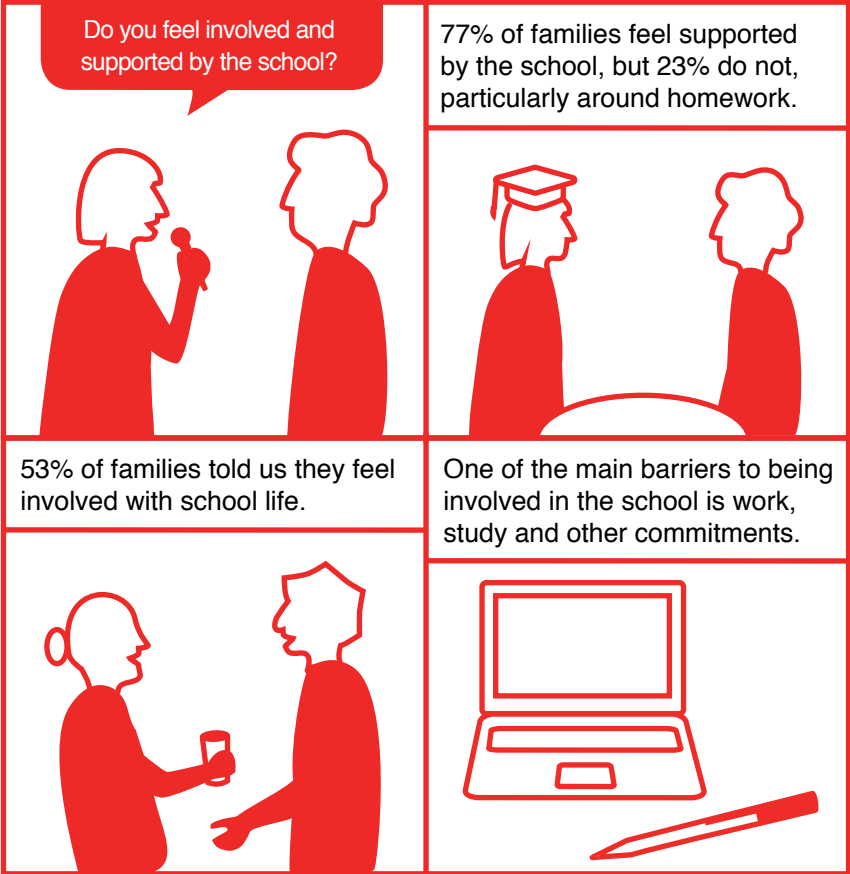


But 20% of families think home learning puts too much demand on parents with little free time.



Families want to know more about the curriculum and what their children are learning.

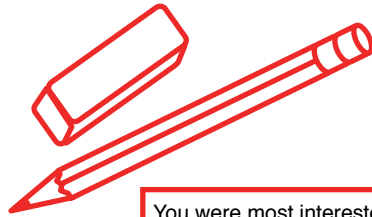




41% of families would like to be more involved with the school, and a further 38% would like to if they had the time

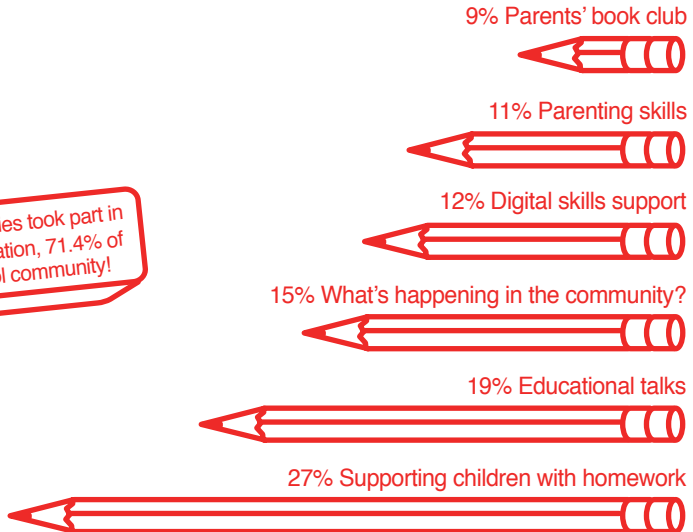


Workshops for parents/carers can help children with home-learning, for example, to explain activities that can be done at home.



You were most interested in workshops on...

**195** families took part in the consultation, 71.4% of the school community!





# How can we continue to improve?

What Hermitage Park Primary School can do:

We will send a termly newsletter home to let you know intended learning and class news.

We will hold a curriculum information evening for every class.

We will offer workshops for parents on helping your child with their health, wellbeing and emotional literacy.



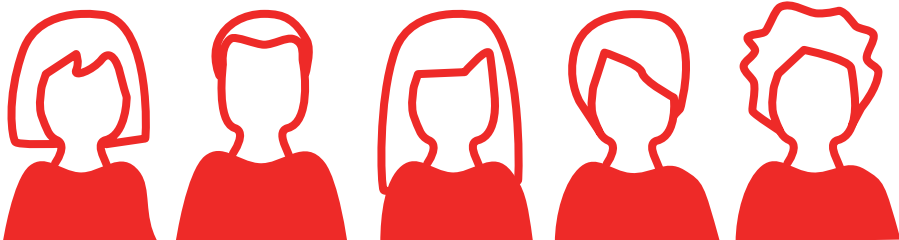
# Who are we?

This project was designed and delivered by People Know How, in partnership with Hermitage Park Primary School.

We are People Know How, an Edinburgh charity that works with people and communities to provide innovative solutions to address social issues.

Our work is founded on consulting and listening to the people we aim to support.

We work alongside them to unlock their ideas, delivering projects that directly provide the tools, support and services that they have identified a need for.



# What next?



Do you have ideas you'd like to share?

Contact the school at:  
[www.hermitageparkprimary.com/contact](http://www.hermitageparkprimary.com/contact)

Or email People Know How at:  
[miren.ochoa@peopleknowhow.org](mailto:miren.ochoa@peopleknowhow.org)

# Contact

Miren Ochoa  
Operations Manager

0131 569 0525

[miren.ochoa@peopleknowhow.org](mailto:miren.ochoa@peopleknowhow.org)  
[www.peopleknowhow.org](http://www.peopleknowhow.org)

People Know How  
525 Ferry Road  
Edinburgh EH5 2FF

Registered charity in Scotland  
No. SC043871



/peopleknowhow



@PKHinnovation



@peopleknowhow



/PeopleKnowHow1

